



# SERVICE BULLETIN

Classification:

AT01-004a

Reference:

NTB01-055a

Date:

September 24, 2001

## 2001 PATHFINDER: AUTOMATIC TRANSMISSION 1-2 OR 2-3 SHIFT FLARE

This bulletin supercedes NTB00-084 and amends NTB01-055. The Service Information and Service Procedure sections of this Bulletin have been updated to incorporate NTB00-084. Please discard paper copies of NTB01-055 and NTB00-084.

**APPLIED VEHICLE:** 2001 Pathfinder (R50) with Automatic Transmission

### SERVICE INFORMATION

If the automatic transmission of an applied vehicle exhibits the following condition:

- shift flare from 1<sup>st</sup> to 2<sup>nd</sup> or 2<sup>nd</sup> to 3<sup>rd</sup> gear while accelerating,

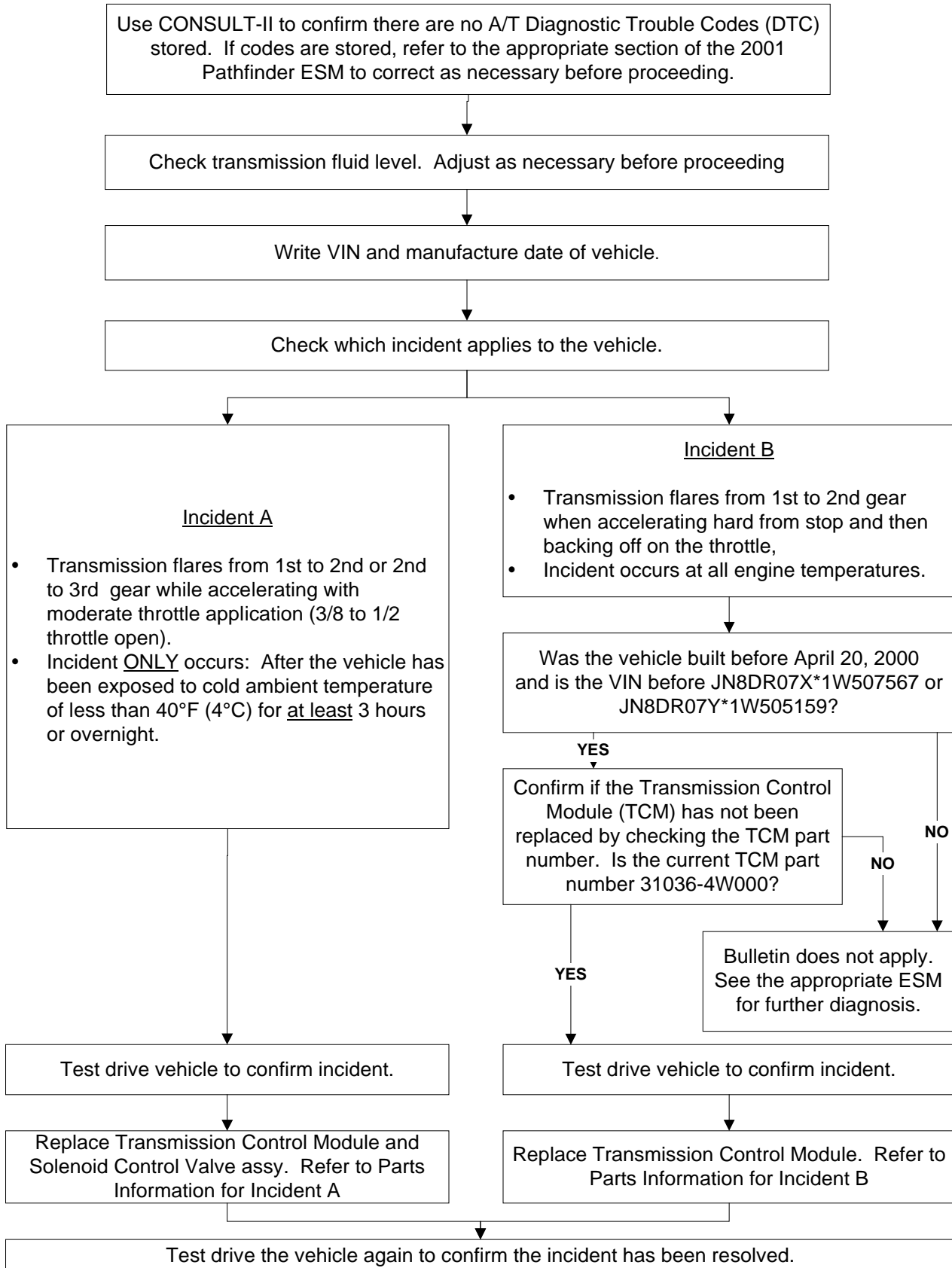
Refer to the Service Procedure in this bulletin to identify and repair the incident.

### SERVICE PROCEDURE

**NOTE:** Shift flare is generally described as a condition where an automatic transmission slips during shifting. The slippage occurs to the point where the engine RPM rises or "flares" up, as though the transmission is no longer "in gear" or the gear clutch seems to be completely disengaged.

1. See Service Procedure Flow Chart on page 2 to identify if this bulletin applies.

# SERVICE PROCEDURE FLOW CHART



## PARTS INFORMATION

### Parts Information for Incident A

DESCRIPTION	PART #	QUANTITY
Transmission Control Module	31036-4W002	1
Solenoid Assy-Control	31940-41X15	1

### Parts Information for Incident B

DESCRIPTION	PART #	QUANTITY
Transmission Control Module	31036-4W001	1

## CLAIMS INFORMATION

Submit a Primary Failed Part (PP) line claim using the following claims coding:

DESCRIPTION	PFP	OP CODE	SYM	DIA	FRT
Replace A/T control unit	(1)	JE34AA	BF	32	(3)
Replace one solenoid/sensor (2)	-	JA62AA (2)	-	-	(3)

1. Refer to the "Parts Information" section above, and use the transmission control module part number indicated in the incident repair as PFP.
2. May only be claimed for Incident A claim repairs.
3. Please reference the current Nissan "Warranty Flat Rate Manual" and use the indicated FRT.